

The Noodle Rack

Christina Luk



Christina Luk was born and brought up in Hong Kong. Stimulated by artistic and innovative things in her surroundings, Christina was aspired to be in the creative field from an early age. After graduated from the Bachelor of Architecture at the University of Toronto, Christina worked in Toronto and obtained her OAA architect license before relocated to Shanghai, China in 2007. In the past 10 years, Christina has been working in medium to big size projects as an architect and a project manager. She has accumulated all facets of the design and construction in a broad range of projects including urban planning, heritage conservation, mixed-used architectural complex, institutional, hospitality interiors and gallery exhibit design. Her strength is in articulating each client's needs and leading her team to fulfill the potentials of each project. Christina founded Lukstudio in Shanghai in 2011, since then her team has created a portfolio that showcases a passion for materials and craftsmanship.



1. Main Entrance
2. Waiting Area
3. Cashier
4. Dining Area
5. Outdoor Dining Area
6. Kitchen
7. Service Station



NET AREA 50m²

SCOPE Storefront Design, Interior Design, Custom Furniture & Lighting Design

DESIGN Christina Luk

DESIGN TEAM Alba Beroiz Blazquez, Cai Jin Hong, Pao Yee Lim

GENERAL CONTRACTOR Shanghai MaiChang Construction Project Co., Ltd.

PHOTOGRAPHY Peter Dixie for LOTAN Architectural Photography

Nestled along an outdoor shopping promenade nearby the Xiangjiang River, the 50-sqm noodle joint exudes a calm yet mysterious presence with its bamboo-cast concrete storefront. Two rustic steel boxes penetrate through the solemn exterior: the taller one is clad with rusted steel panels and its shorter neighbor is built like a metal scaffold. These three elements together orchestrate a journey of discovery.

Walking past the entry box, a customer is greeted by a composed counter design lined with the bamboo mold used for casting the exteriors. As one proceeds towards the halo surrounding the grid structure, the interior layers start revealing themselves. Firstly, the original wall is stripped down to its structural blocks to resonate with the rustic metal grid. Secondly, wooden boxes are carefully placed within the rack to showcase selected porcelains. Finally, a series of metal wires are draped across the dining room to create the lighting feature with hanging bulbs. Balancing the rustic interiors, these reflective strands create a poetic notion of dining under a noodle rack.

Playing with the duality between rustic and refined, eastern tradition and western representation, Lukstudio introduces a crossover between fast food chain and upscale diner. The Noodle Rack differentiates itself from the stigma of kitsch fast food "hole in the wall" on every street of China. It demonstrates how Chinese eateries have the potentials to be reborn into hip gathering spots comparable to the new trend of cafes.

Xiangjiang강 근처의 아웃도어 쇼핑거리에 자리 잡은 50m2의 국수가게는 콘크리트와 대나무가 가게 앞 공간에 함께 함으로써, 고요하면서도 미스터리한 존재로서의 분위기를 풍긴다. 두 개의 전원풍의 철재 상자는 엄숙한 외부 공간을 관통한다.(높은 상자는 녹이 슨 철재 패널로 덮여있으며 그 옆의 작은 상자는 금속 발판처럼 생겼다.) 이러한 세 요소들이 결합하여 조화롭게 한다.

엔트리 박스를 지나면, 외부를 밝히기 위해 사용된 대나무 틀로 디자인한 가지런한 카운터를 맞이할 것이다.

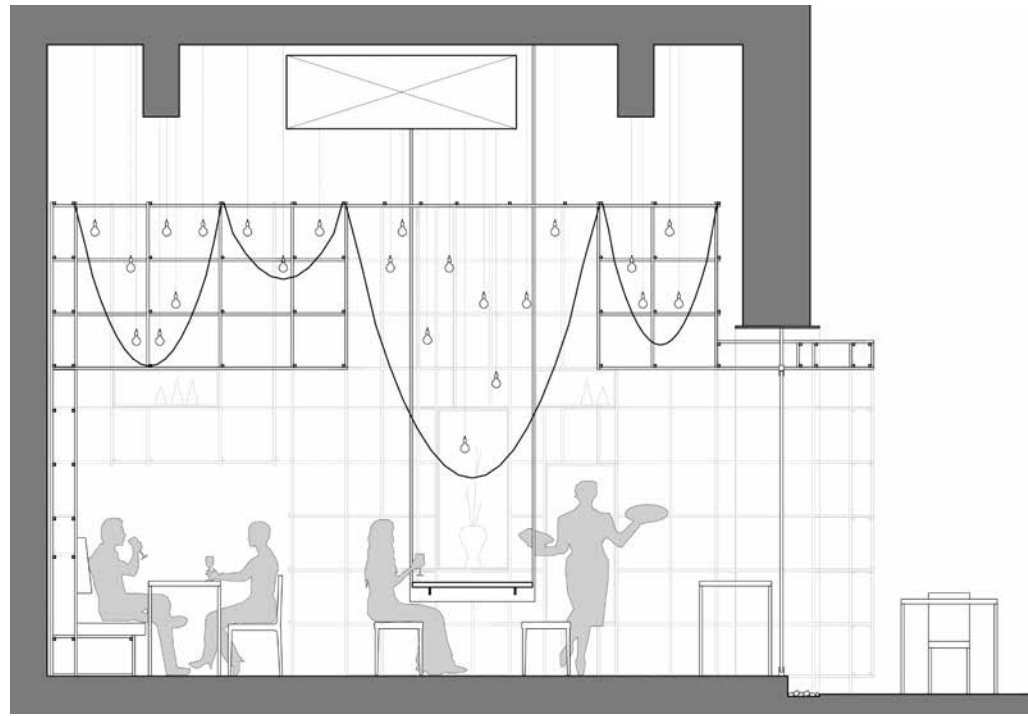
격자구조물을 둘러싸고 있는 할로겐등을 지날 때, 내부 계층이 드러나기 시작한다.

먼저 원래의 벽은 녹이 슨 금속격자와 구조 블록을 상기시키기 위해 벗겨냈다. 둘째로, 나무 상자 선반 안에 선택된 도자기들을 신중하게 진열했다.

마지막으로, 일련의 금속 와이어들은 전구 조명의 기능을 다하기 위해 식당을 가로질러 드리워진다. 녹이 슨 인테리어들과 균형을 맞추며 이 사색적인 가닥들은 국수 선반 아래에서 시적인 식사의 개념을 만들어 낸다.

동양적 전통인 소박함과 서양적 묘사인 세련됨 사이를 표현하며, Lukstudio는 평균이상의 식사를 하는 사람과 패스트푸드 체인 사이의 교차를 소개한다. 국수 선반은 중국 전역에 있는 질 낮은 패스트 푸드, "좁고 어둡한 가게" 라는 오명으로부터 그들 자신을 벗어나게 하고 있다. 그것은 중국 식당들이 새로운 트렌드인 카페와 비교해 모임의 명소로 재탄생할 수 있는 가능성을 보여준다.





Plan



